

SOLD



256 Eddystone Ave, Beldon



Beldon Beauty With Development Potential

Set in a highly convenient pocket of Beldon, this modern and beautifully presented three bedroom family home has been cared for by the same owner for the past 25 years and offers a wonderful combination of immediate comfort and future potential.

Set on a generous, level block with R20/40 zoning (subject to council approval), this property presents an ideal live in now, develop later opportunity, but is equally appealing to families, investors and astute buyers looking to secure land in a growth location.

Inside, the home delivers multiple living zones including a spacious formal lounge and dining area, plus a large open plan

🚗 3 🏠 1 🚗 2 📏 707 m²

Price SOLD for
\$972,000

Property Type Residential

Property ID 277

Land Area 707 m²

Agent Details

Lee Tamblin - 0466 250 944
Mitchell Tamblin - 0466 250 944

Office Details

One Percent Realty WA
1003/162 Canna Drive
Canning Vale, WA, 6155

family and meals space that is overlooked by bright open kitchen that offers a seamless indoor outdoor flow - perfect for relaxed family living or entertaining friends.

Australia
61 466 250 944

Accommodation includes three generous double bedrooms, with the master offering a walk in robe and semi ensuite, while the remaining bedrooms feature built in storage. Comfort is assured year round with ducted evaporative air conditioning throughout.

Outdoors, a lovely patio and pergola area overlooks the expansive backyard — a fantastic blank canvas with plenty of room for a future pool, entertaining upgrades or potential redevelopment (STCA).

All of this is located within walking distance to Belridge Shopping Centre, medical facilities, schools and public transport, with Edgewater Train Station, Mitchell Freeway and beautiful beaches just minutes away.

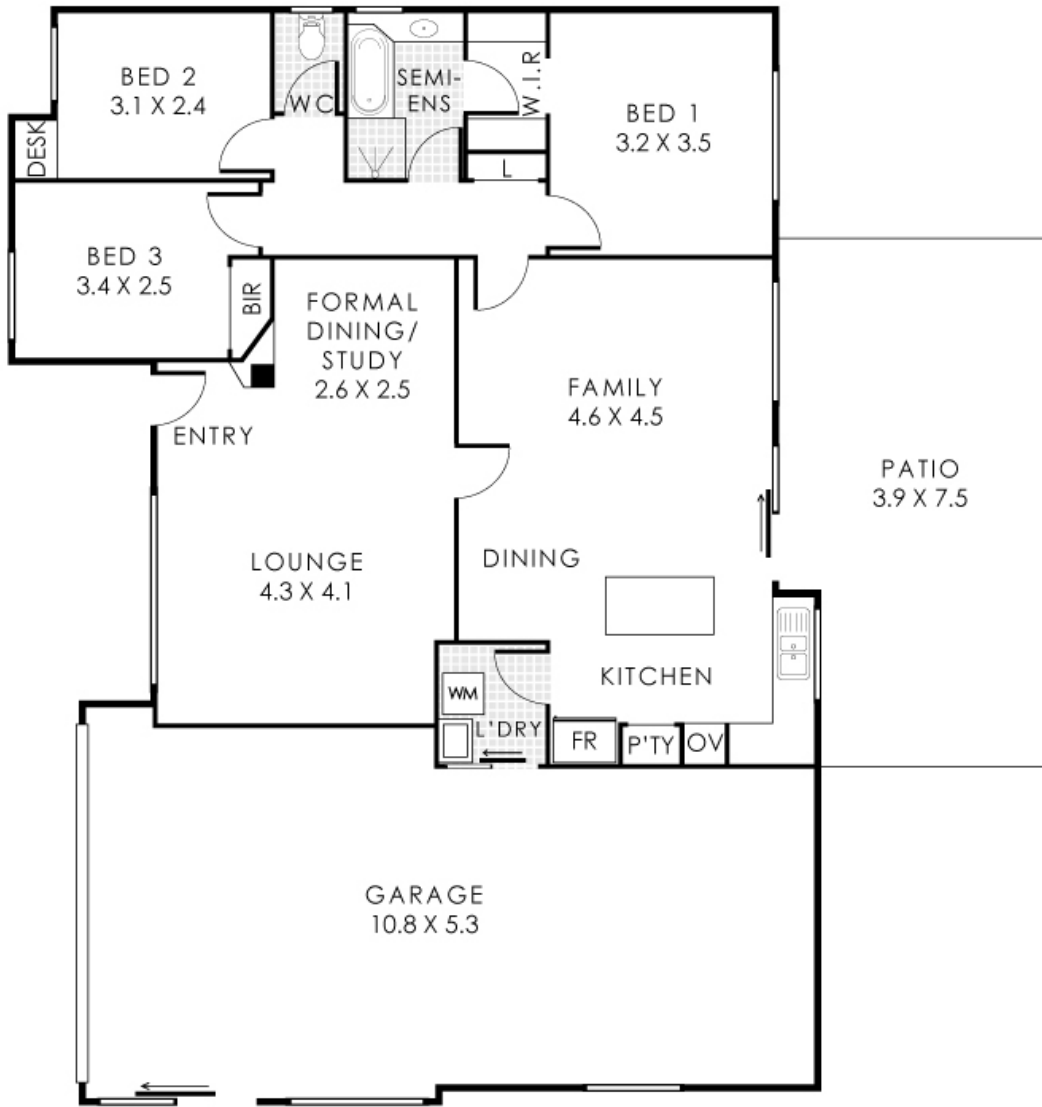
Well maintained, versatile and superbly located, this is an opportunity not to be missed.

Key Features:

- * Same owner occupier for the last 25 years
- * Extremely well presented and move-in ready family home
- * Highly convenient location close to shops, schools, transport and medical facilities
- * Zoned R20/40 offering future development potential (STCA)
- * Master bedroom with walk-in robe and semi-ensuite
- * Modern semi ensuite bathroom with separate bath and shower
- * Spacious formal lounge and dining area with reverse cycle air conditioning
- * Large open-plan family and meals area with tiled flooring
- * Bright kitchen with island bench, gas cooking and built in pantry

- * Two generous minor bedrooms with built in robes
- * Separate laundry with excellent storage and double linen press in hallway
- * Ducted evaporative air conditioning throughout
- * Security screens on all windows and doors
- * Lovely outdoor patio and pergola overlooking the level backyard
- * Automatic double garage under the main roof with workshop area
- * Built in 1989
- * 707sqm block

The above information provided has been furnished to us by the vendor/s. We have not verified whether or not that information is accurate and do not have any belief in one way or the other in its accuracy. We do not accept any responsibility to any person for its accuracy and do no more than pass it on. All interested parties should make and rely upon their own inquiries in order to determine whether or not this information is in fact accurate.



256 Eddystone Avenue, Beldon

Residence 109m² | Garage 53m² | Patio 29m²

Total Area 191m²



This floorplan is for illustration purposes only to show the layout of the property. Whilst every effort has been made to ensure the accuracy of this floor plan, of measurements, and any other information shown are an approximate interpretation only. Measurements and total areas do not include or account for wall thickness or roof area under eaves. Crib Creative will not be held liable or responsible for any error, omission, misrepresentation or use of any information shown on the final floor plan. Not to be used for any other purpose.
www.cribcreative.com.au