

SOLD



8 Ray Rd, Kewdale



Stylish, Low Maintenance Living & Steps from PEET Park

Experience effortless modern living in this beautifully crafted 2017 residence, perfectly positioned in one of the finest streets in Kewdale and just a short walk to PEET park, a sought after Kewdale neighbourhood

This 335sqm block features a low maintenance design with stylish updates throughout, making it an ideal choice for comfortable and contemporary living.

Inside, the spacious 156sqm of living (Total - 212sqm) boasts a chic galley style kitchen with stone benchtops with waterfall side panels, 900mm appliances and a central location that's perfect for entertaining.

3 2 2 335m2

Price SOLD for \$1,170,000

Property Type Residential

Property ID 266

Land Area 335 m2

Floor Area 156 m2

Agent Details

Lee Tamblin - 0466 250 944

Mitchell Tamblin - 0466 250 944

Office Details

One Percent Realty WA

1000/1000 ...

The master suite offers a spacious walk-in robe with fitted shelving and a private ensuite, while additional bedrooms are generously sized with ample storage. An inviting theatre room & zoned reverse cycle air conditioning enhance the home's functionality and comfort.

1003/162 Canna Drive
Canning Vale, WA, 6155
Australia
61 466 250 944

Zero corner sliding doors open the main living area seamlessly to the alfresco, creating a true indoor / outdoor connection to an alfresco area under the main roof, with pull down screens for protection from the weather and a secure rear garden with small grassed space for the children or furry friends to play.

This move in ready gem combines style, convenience, and sustainability in a location close to all local amenities.

Don't miss your chance to call this Kewdale haven, your home!

END DATE SALE - ALL OFFERS PRESENTED BY SUNDAY 25TH JANUARY at 5:00PM. The Seller reserves the right to accept an offer prior to this date without notice.

Key Features:

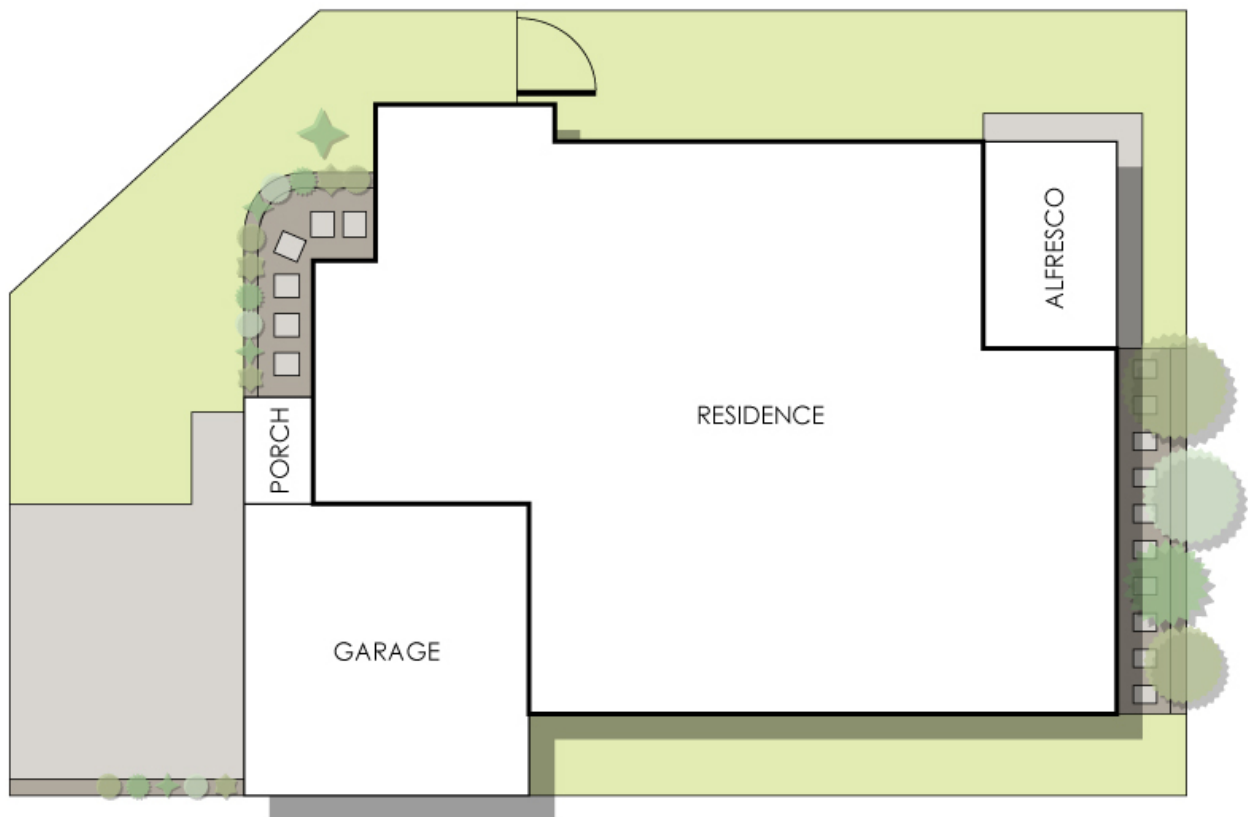
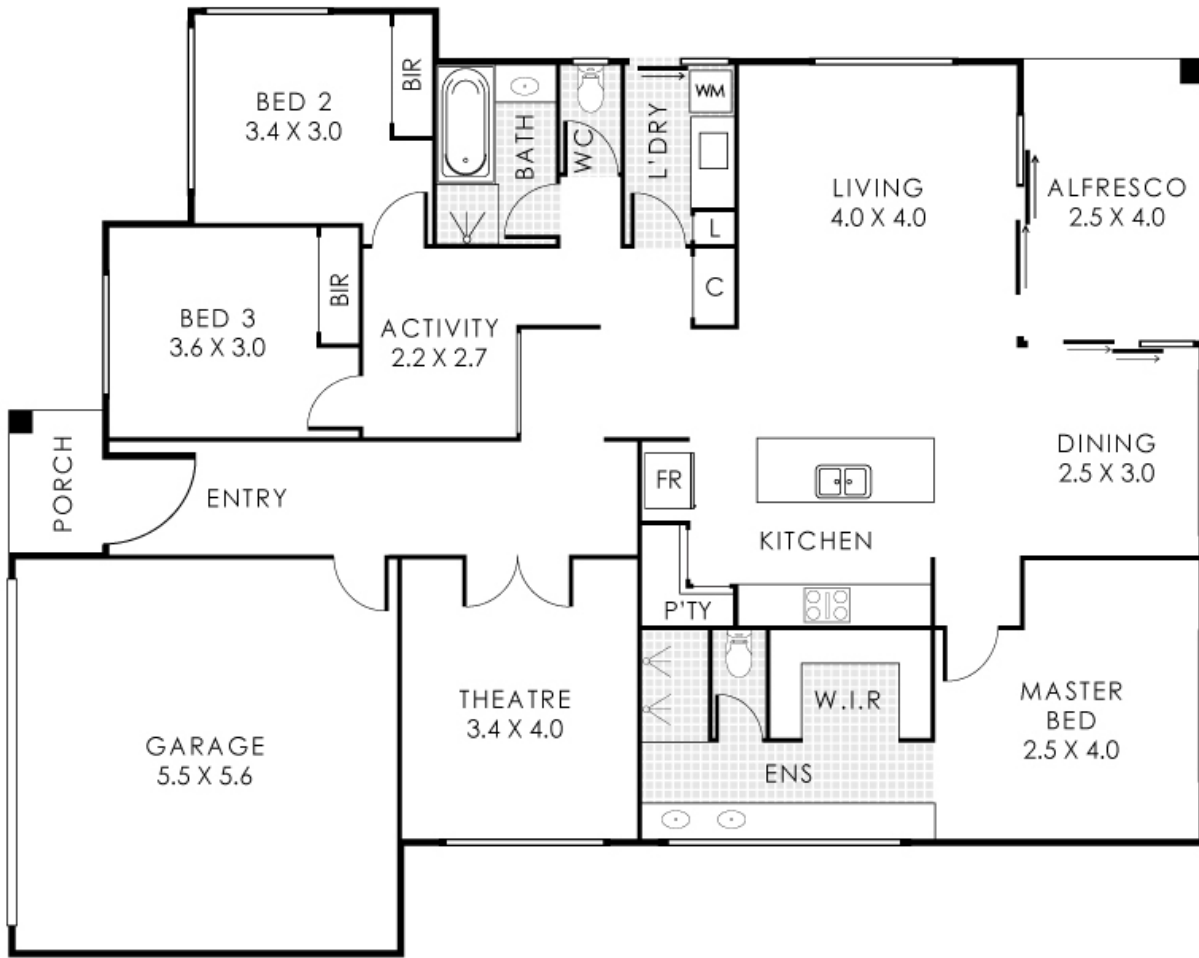
- * Master bedroom with large WIR and ensuite bathroom
- * Separate theatre room, with double doors perfect for cosy movie nights
- * Kitchen offers stone bench tops, high-quality finishes and 900mm stainless steel appliances
- * Large walk in pantry
- * Open plan spacious living and dining area
- * Fantastic storage including a linen cupboard
- * The convenience of ducted reverse cycle air conditioning with zones
- * Tiled flooring throughout living
- * Minor bedrooms are all very generous in size and have built in robes
- * Separate activity or study area between the minor bedrooms

- * Zero corner sliding doors open the main living area seamlessly to the alfresco
- * Fantastic alfresco area perfect for outdoor entertaining all year round
- * Instant gas hot water system
- * Perfect amount of grass in a safe and secure rear garden
- * Easy care front gardens
- * Double garage with shoppers entry
- * Close to (all approximate) Peet Park 240m, Belmont Forum 1km, Perth Airport 7.6km
- * Built in 2017
- * Built by Grand Living Homes
- * 355sqm block
- * 156sqm of living

Financials:

- * Council rates \$2,023pa
- * Water rates \$1,415pa
- * Strata fees \$0

The above information provided has been furnished to us by the vendor/s. We have not verified whether or not that information is accurate and do not have any belief in one way or the other in its accuracy. We do not accept any responsibility to any person for its accuracy and do no more than pass it on. All interested parties should make and rely upon their own inquiries in order to determine whether or not this information is in fact accurate.



8 Ray Road, Kewdale

Residence 181m² | Porch 3m² | Garage 31m² | Alfresco 10m²

Total Area 225m²



This floorplan is for illustration purposes only to show the layout of the property. Whilst every effort has been made to ensure the accuracy of this floor plan, of measurements, and any other information shown are an approximate interpretation only. Measurements and total areas do not include or account for wall thickness or roof area under eaves. Crib Creative will not be held liable or responsible for any error, omission, misrepresentation or use of any information shown on the final floor plan. Not to be used for any other purpose.
www.cribcreative.com.au