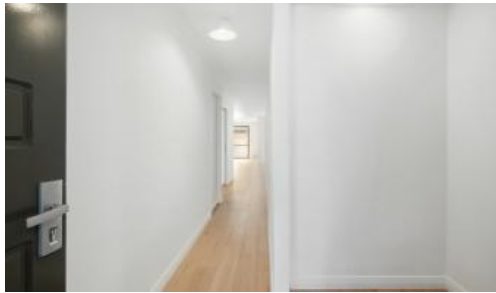


Sold



134 Hamilton St, Queens Park



## MODERN 4 BEDROOM HOME – FRESHLY UPDATED & MOVE-IN READY!

Discover your future home or investment with this stylish 4 bedroom, 2 bathroom home, perfectly positioned on a green title 330sqm block at the sought-after end of Hamilton Street.

Recently professionally painted throughout with brand new flooring, this home is completely refreshed and ready to move in with nothing to do! Enjoy the convenience of being just a short stroll from schools, playgrounds, local shops, specialty stores and the train station.

With a potential rent of up to \$700 per week this a fantastic opportunity for investors or those looking for a hassle free home with great rental income potential.

Act quickly—this well-priced property won't last long!

4 2 2 330 m2

Price SOLD for \$760,000

Property Type Residential

Property ID 188

Land Area 330 m2

### AGENT DETAILS

Lee Tamblin - 0466 250 944

### OFFICE DETAILS

One Percent Realty WA  
1003/162 Canna Drive Canning  
Vale, WA, 6155 Australia  
61 466 250 944

**ONE**

### Property Features:

- \* Master bedroom with walk in robe, modern ensuite and split system AC
- \* Open plan kitchen/family/dining area
- \* Modern kitchen with plenty of storage 900mm gas cooktop & rangehood
- \* Corner pantry and breakfast bar
- \* Split system air condition in living area
- \* Beautiful recessed high ceilings in the living
- \* Good size minor bedrooms two with BIRs and split system AC
- \* 4th Bedroom could be used as a home office or study
- \* Freshly professionally painted throughout
- \* Brand new flooring installed throughout
- \* Modern main bathroom inc bath and separate shower
- \* Separate laundry
- \* Double lockup garage with internal door access
- \* Fully paved front and back so extremely low maintenance
- \* 330sqm block
- \* 141sqm of living

### Great Location

- \* Easy access to Albany Hwy, Leach Hwy and Welshpool Road
- \* 600m walk to Queens Park Train Station
- \* 10km to City Centre
- \* 6 minutes drive to Carousel Shopping Centre
- \* 4 minutes drive to Cannington Leisureplex

The above information provided has been furnished to us by the vendor/s. We have not verified whether or not that information is accurate and do not have any belief in one way or the other in its accuracy. We do not accept any responsibility to any person for its accuracy and do no more than pass it on. All interested parties should make and rely upon their own inquiries in order to determine whether or not this information is in fact accurate.