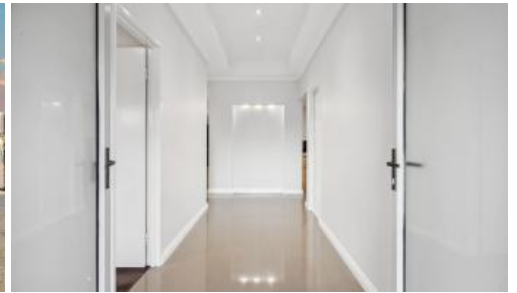


Sold



118 Gay St, Huntingdale



## SIMPLY STUNNING

Step into a world where sophistication meets comfort in this impeccably designed family haven, crafted to reflect elegance and cutting edge style.

Built in 2013, this contemporary gem boasts a generous 248sqm floorplan, offering luxury living in every corner, within the stylish, open plan living spaces, where recessed ceilings and modern lighting create an atmosphere that's both inviting and impressive.

Entertaining becomes effortless in the stunning gourmet kitchen, equipped with expansive Corian benchtops, premium appliances, and an oversized walk in pantry. Host gatherings with ease as guests marvel at your culinary skills from the breakfast bar and for those moments of refined relaxation, retreat to the exclusive bar room, perfectly tucked away in its own closable space.

The seamless indoor-outdoor flow leads to a covered alfresco area, designed for year round enjoyment, complete with established garden beds

🛏️ 4 🚿 2 🚗 2 📏 661 m2

Price	SOLD
Property Type	Residential
Property ID	148
Land Area	661 m2
Floor Area	248 m2

### AGENT DETAILS

Lee Tamblin - 0466 250 944

### OFFICE DETAILS

One Percent Realty WA  
1003/162 Canna Drive Canning  
Vale, WA, 6155 Australia  
61 466 250 944

ONE

and low maintenance artificial lawns. A sparkling below-ground pool beckons you to unwind, accompanied by a gazebo-patio relaxation area – your own private oasis.

Impeccable throughout, this home boasts quality porcelain tiled flooring, plush carpets, and reverse cycle ducted air conditioning to keep you comfortable no matter the season. Whether you're entertaining or simply enjoying peaceful family life, this home blends elegance with function effortlessly.

### **Key Features:**

- \* Double door entry
- \* Stunning foyer with recessed wall niches for your family photos
- \* Luxury living in every corner
- \* Chic finishes to high end functionality
- \* Separate large office or study area
- \* Huge master bedroom with recessed ceiling, full ensuite and plantation shutters
- \* Hotel style ensuite with double vanities, stunning bath area and huge shower
- \* Open plan living with recessed ceilings and modern lighting
- \* Gourmet kitchen with Corian benchtops
- \* Premium appliances and huge walk in pantry
- \* Spacious breakfast bar, perfect for casual meals
- \* Dedicated closable bar room to house all your
- \* Large minor bedrooms all with BIRs
- \* Reverse cycle ducted air conditioning for year-round comfort
- \* High ceilings, quality tiled flooring and plush carpets throughout
- \* Seamless indoor-outdoor living with a covered alfresco area
- \* Sparkling below ground swimming pool
- \* Gazebo and patio area for relaxing poolside
- \* Low-maintenance backyard with established garden beds
- \* Easy-care artificial lawns
- \* Ample storage space
- \* Set on a generous 661sqm block
- \* Expansive 248sqm of living

